

This new centre consolidates Study Group's headquarters with an international residential college on a constrained site close to Brighton mainline station, designed with sustainability at its heart.

As an anchor to the masterplan within Brighton's New England Quarter, the scheme provides offices alongside a 1000-pupil international school, including specialist teaching spaces and residential accommodation for 375 students. This delivers a diverse community of international students into the heart of the site with no car use. The design links the Centre's diverse functions; with corporate, academic and residential components each having their own briefs, the spacious atrium-street offers a focal point to bring these elements together.

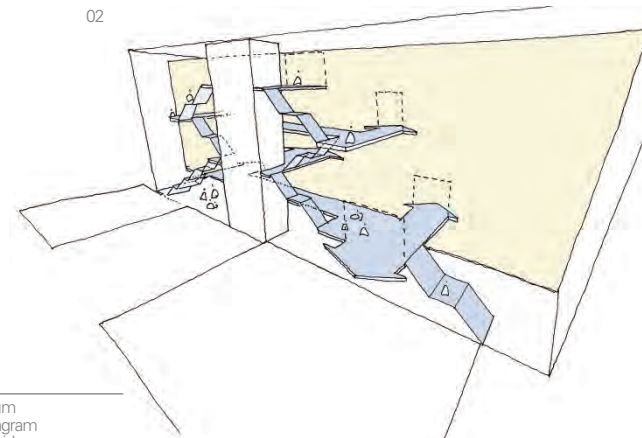
This scheme has been designed to high standards in terms of economic, environmental and social sustainability. The bold standard to reduce carbon use set by the Local Authority was achieved through benchmarks based on best practice for each of the uses; the aim for the design was to outperform the target by 40%. We also worked closely with the City to meet their biodiversity aims, incorporating sedum roofs, green walls and bird nest boxes

into the building fabric, to reduce the urban heat island effect and encourage biodiversity.

The scheme is organised with specialist teaching to the east, shared teaching and administration offices to the west, and residential clusters to the north. Formerly located on five different sites with separate brand identities, the design challenge was how to bring together these distinct school communities and the headquarters' staff into one building, creating a new shared identity.

The spacious atrium-street addresses the need to avoid segregation through the subtle use of space, light and transparency, preventing any particular social, national or ethnic group from dominating any one area of the building. It also provides clear articulation for the students, whilst the relationship with the buildings along the street edge offers a rich street scene to the wider community.

The residential accommodation is arranged as centrally catered halls over five floors, and also includes a number of studio flats for staff and wardens. Each floor has several common rooms together with a larger communal facility on the ground floor.



01 Entrance atrium
02 Circulation diagram
03 Connecting bridges

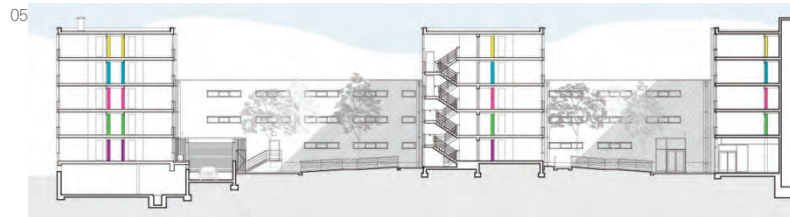


Total Area : 13,500sqm GIA
 Procurement Type : Two Stage Design and Build
 Local Authority : Brighton and Hove City Council

An internet café, refectory and breakout spaces are arranged around a series of landscaped courtyards, each with secure access. Again the design was led by the aim to create a shared and distinctive identity.

The building structure consisted of a reinforced concrete frame which was in-filled with a lightweight façade system, with enhanced insulation and airtightness levels. All the materials were selected as part of a green procurement strategy, where the environmental impact of each element of the building was assessed, including embodied energy, manufacture, recyclability and eco-toxicity. Each study bedroom contains a prefabricated concrete wetroom that was delivered to site fully-finished internally. The use of these factory-produced bathroom pods has resulted in a high quality finish with no defects. All wet trades were eliminated internally and externally which allowed the construction to meet the tight programme and minimise waste.

The scheme achieved a bespoke BREEAM Very Good rating and an ACE Engineering Excellence Commendation for its low energy design.



- 01 Internet Café
- 02 Student residences
- 03 Sustainability diagram
- 04 Learning Resources Centre
- 05 Longitudinal section